



24 JULY 2017

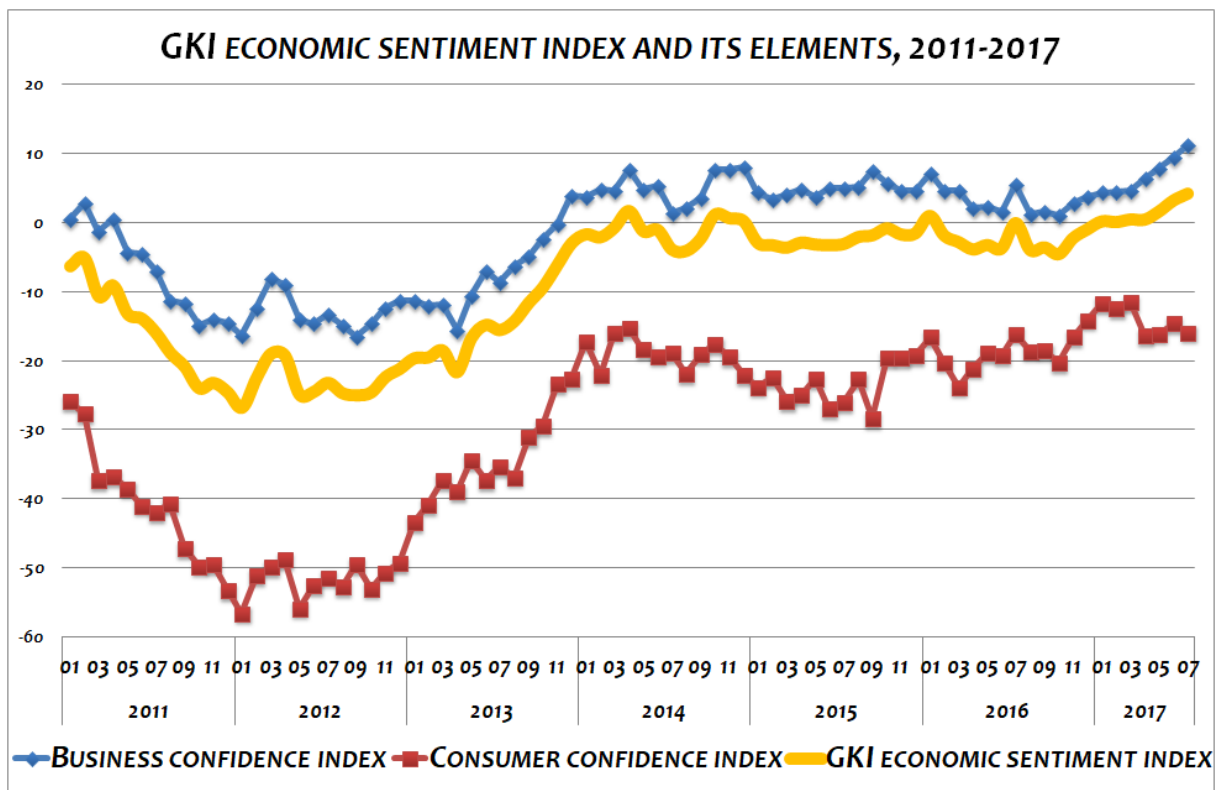
GKI ECONOMIC SENTIMENT INDEX REACHED ITS HISTORIC PEAK IN JULY

GKI's economic sentiment index and the business confidence index have never been as high as now so far during its more than twenty years of history. According to the empirical survey conducted by GKI (www.gki.hu) with the support of the EU consumer expectations deteriorated slightly compared to June, although they still reflect strong optimism.

In July, industrial and construction expectations in the **business sector** also reached their historic peak, whereas the optimism of trading and service companies fell somewhat compared to June, although it remained strong. In **industry**, the assessment of the production of the preceding period, the stock of orders (including exports) and stocks improved. Only production expectations weakened. In **construction**, the expectations of companies in structural and civil engineering became more favourable. For example, opinions on incoming orders improved noticeably. At the same time, the assessment of production in the preceding quarter deteriorated significantly. Although the **trade** confidence index declined slightly, it remained within the relatively narrow band in which it fluctuated in the past three and a half years. The assessment of sales positions improved slightly, whereas that of stocks and incoming orders became a bit worse. Although the **services** confidence index declined somewhat, it is still very high. Although the evaluation of the general business climate improved, that of turnover worsened.

Intentions to employ strengthened in industry and construction. It weakened somewhat in trade and services. People's fear of unemployment intensified slightly. At the same time, labour shortages were considered to be the most important obstacle to growth in all sectors. Companies' **intentions to raise prices** barely changed. The overwhelming majority expect unchanged prices, and the share of those wishing to raise prices, with the exception of construction, only slightly exceeded those expecting price cuts. However, the inflationary expectations of consumers increased a bit. The assessment of the perspectives of the **Hungarian economy** improved in every industry, while it slightly deteriorated among consumers.

Following its slight decline in June, the **GKI consumer confidence index** fell to its May level in July. Households assessed their financial situation slightly worse for the next 12 months compared to June. The assessment of their expected savings capacity remained unchanged.



EXPLANATION TO THE METHODOLOGY:

In line with the methodology used by the EU, GKI surveys the expectations of industry, trade, construction, services and households in the calculation of its business confidence index. GKI economic sentiment index is the weighted average of the consumer confidence index and the business confidence index.

The business confidence index is calculated from the responses of enterprises in industry, trade, construction and services given to questions concerning the state of business and expectations of turnover and employment. (As far as services are concerned, similarly to the practice of the EU, companies of the financial and public sectors have not been included in the surveys yet.) GKI publishes seasonally adjusted data by using appropriate mathematical methods to filter out the discrepancies caused by seasonal effects (e.g., differences in weather conditions between winter and summer, increased demand before Christmas, lower output because of summer vacations).

The consumer confidence index is calculated from responses given to questions concerning the expected financial position of households, the expected economic and unemployment situation of the country, and the prospects for saving.

GKI ECONOMIC SENTIMENT INDEX AND ITS ELEMENTS, 2011-2017

Year	Month	Business confidence index	Consumer confidence index	GKI economic sentiment index
2011	01	0.5	-25.8	-6.3
	02	2.9	-27.7	-5.1
	03	-1.3	-37.3	-10.7
	04	0.6	-36.8	-9.1
	05	-4.3	-38.5	-13.2
	06	-4.4	-41	-13.9
	07	-6.9	-42	-16
	08	-11.3	-40.7	-18.9
	09	-11.7	-47.2	-20.9
	10	-14.9	-49.8	-24
	11	-14	-49.5	-23.2
	12	-14.5	-53.3	-24.6
2012	01	-16.3	-56.6	-26.8
	02	-12.4	-51.2	-22.5
	03	-8.1	-49.9	-19
	04	-9	-48.8	-19.3
	05	-14	-55.9	-24.9
	06	-14.6	-52.6	-24.5
	07	-13.3	-51.4	-23.2
	08	-14.9	-52.7	-24.7
	09	-16.4	-49.5	-25
	10	-14.6	-53	-24.6
	11	-12.4	-50.7	-22.4
	12	-11.3	-49.3	-21.2
2013	01	-11.3	-43.4	-19.6
	02	-12.0	-40.9	-19.5
	03	-11.9	-37.3	-18.5
	04	-15.6	-38.9	-21.7
	05	-10.5	-34.4	-16.7
	06	-6.9	-37.3	-14.8
	07	-8.6	-35.3	-15.5
	08	-6.3	-36.9	-14.3
	09	-4.8	-31.0	-11.6
	10	-2.3	-29.4	-9.3
	11	-0.1	-23.3	-6.1
	12	4.0	-22.7	-2.9
2014	01	3.8	-17.2	-1.7
	02	4.9	-22.0	-2.1
	03	4.7	-15.9	-0.7
	04	7.7	-15.3	1.7
	05	4.8	-18.4	-1.2
	06	5.4	-19.3	-1.0
	07	1.4	-18.9	-3.9
	08	2.2	-21.9	-4.1
	09	3.6	-19.1	-2.3
	10	7.8	-17.6	1.2
	11	7.7	-19.4	0.7
	12	8.1	-22.1	0.2

Year	Month	Business confidence index	Consumer confidence index	GKI economic sentiment index
2015	01	4.4	-23.8	-2.9
	02	3.5	-22.4	-3.2
	03	4.2	-25.8	-3.6
	04	4.9	-25.0	-2.9
	05	3.7	-22.6	-3.1
	06	5.1	-27.0	-3.2
	07	5.0	-26.0	-3.1
	08	5.2	-22.7	-2.1
	09	7.5	-28.3	-1.8
	10	5.8	-19.6	-0.8
	11	4.6	-19.6	-1.7
	12	4.7	-19.2	-1.5
2016	01	7.2	-16.6	1.0
	02	4.6	-20.2	-1.8
	03	4.6	-23.8	-2.8
	04	2.2	-21.1	-3.9
	05	2.3	-18.9	-3.2
	06	1.7	-19.2	-3.7
	07	5.6	-16.1	0.0
	08	1.2	-18.6	-3.9
	09	1.7	-18.5	-3.6
	10	1.0	-20.3	-4.5
	11	2.8	-16.5	-2.2
	12	3.7	-14.1	-0.9
2017	01	4.4	-11.7	0.2
	02	4.5	-12.4	0.1
	03	4.7	-11.5	0.5
	04	6.4	-16.4	0.5
	05	7.9	-16.1	1.7
	06	9.5	-14.6	3.2
	07	11.3	-15.9	4.2

GKI ECONOMIC RESEARCH CO.

1092 Budapest. Ráday u. 42-44.

Phone: +36 1 318 1284

E-mail: gki@gki.hu

For more information:

Gábor Karsai (karsai.gabor@gki.hu); Raymund Petz (petz.raymund@gki.hu)