



26 MARCH 2018

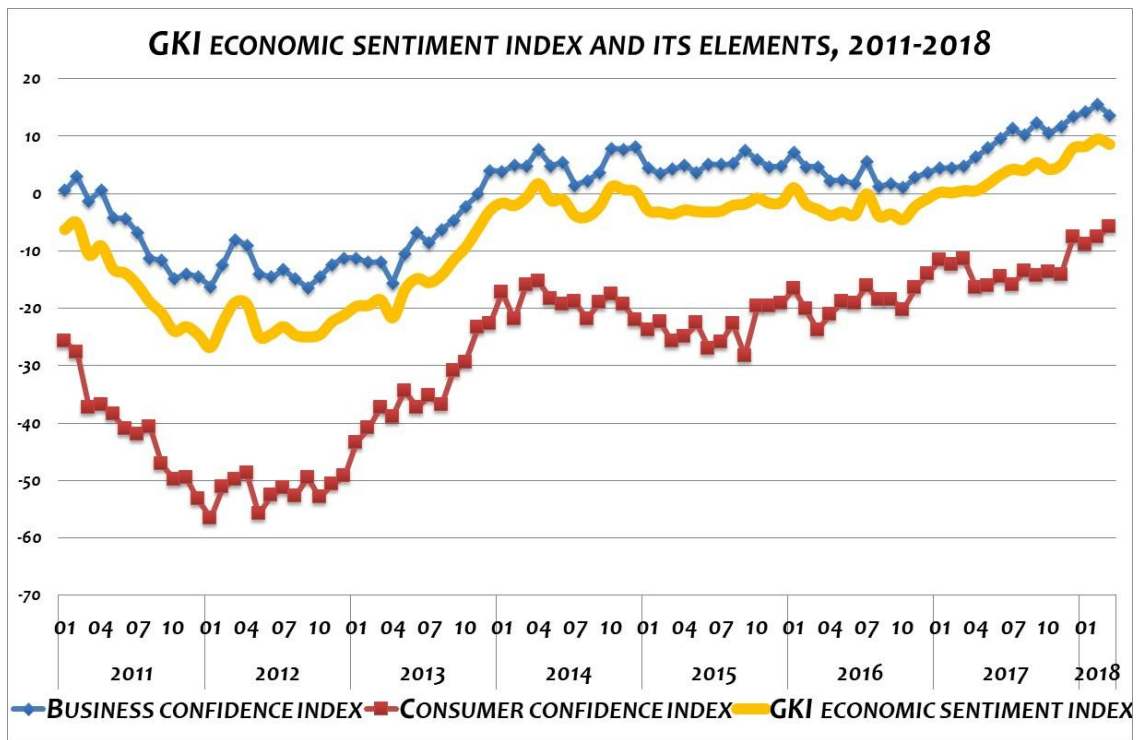
## COMPARED TO ITS PEAK, GKI'S ECONOMIC SENTIMENT INDEX FELL SLIGHTLY IN MARCH

After its historic peak in February, the GKI's economic sentiment index fell slightly in March. According to the empirical survey conducted by GKI ([www.gki.hu](http://www.gki.hu)) with the support of the EU, expectations deteriorated slightly in the business sector, whereas they continued to rise among consumers.

Expectations of all sectors deteriorated somewhat in the **business sphere** in March. After its historic peak in February, the **industrial** confidence index declined in March. Although the assessment of the production and stock levels of the past period improved, prospects deteriorated. The total stock of orders was also rated as less favourable (though export orders were evaluated slightly better). The **construction** confidence index has been declining for three quarters compared to its historic peak. Structural engineering companies have never been so optimistic. Although the assessment of production in the preceding three-month period improved somewhat in March, that of orders declined slightly. The **trade** confidence index fell most significantly in March, though only compared to its historic peak in February. The assessment of sales positions, stock levels and incoming orders deteriorated. The **services** confidence index fell to its December level in March. The assessment of turnover in the past period and that of the general business climate deteriorated considerably. However, sales expectations improved.

**Intentions to employ** were restrained in all sectors, except for trade, where they improved. At the same time, the fear of unemployment of households eased. Intentions to **lift prices** dropped in industry and construction, strengthened in trade and services, and inflationary expectations of consumers became noticeably more pronounced. The assessment of the **situation of the Hungarian economy** remained unchanged in industry, it deteriorated in construction, whereas it improved in trade and services as well as among households.

After February, **GKI's consumer confidence index** rose in March. It was higher than now only in November 2002. Households evaluated their financial situation and their current and future savings capacity slightly better than in February. In addition, households considered the possibility of purchasing high-value durables strongly improving as well.



#### EXPLANATION TO THE METHODOLOGY:

In line with the methodology used by the EU, GKI surveys the expectations of industry, trade, construction, services and households in the calculation of its business confidence index. GKI economic sentiment index is the weighted average of the consumer confidence index and the business confidence index.

The business confidence index is calculated from the responses of enterprises in industry, trade, construction and services given to questions concerning the state of business and expectations of turnover and employment. (As far as services are concerned, similarly to the practice of the EU, companies of the financial and public sectors have not been included in the surveys yet.) GKI publishes seasonally adjusted data by using appropriate mathematical methods to filter out the discrepancies caused by seasonal effects (e.g., differences in weather conditions between winter and summer, increased demand before Christmas, lower output because of summer vacations).

The consumer confidence index is calculated from responses given to questions concerning the expected financial position of households, the expected economic and unemployment situation of the country, and the prospects for saving.

## GKI ECONOMIC SENTIMENT INDEX AND ITS ELEMENTS, 2011-2017

Year	Month	Business confidence index	Consumer confidence index	GKI economic sentiment index
2011	01	0.5	-25.8	-6.3
	02	2.9	-27.7	-5.1
	03	-1.3	-37.3	-10.7
	04	0.6	-36.8	-9.1
	05	-4.3	-38.5	-13.2
	06	-4.4	-41	-13.9
	07	-6.9	-42	-16
	08	-11.3	-40.7	-18.9
	09	-11.7	-47.2	-20.9
	10	-14.9	-49.8	-24
	11	-14	-49.5	-23.2
	12	-14.5	-53.3	-24.6
2012	01	-16.3	-56.6	-26.8
	02	-12.4	-51.2	-22.5
	03	-8.1	-49.9	-19
	04	-9	-48.8	-19.3
	05	-14	-55.9	-24.9
	06	-14.6	-52.6	-24.5
	07	-13.3	-51.4	-23.2
	08	-14.9	-52.7	-24.7
	09	-16.4	-49.5	-25
	10	-14.6	-53	-24.6
	11	-12.4	-50.7	-22.4
	12	-11.3	-49.3	-21.2
2013	01	-11.3	-43.4	-19.6
	02	-12.0	-40.9	-19.5
	03	-11.9	-37.3	-18.5
	04	-15.6	-38.9	-21.7
	05	-10.5	-34.4	-16.7
	06	-6.9	-37.3	-14.8
	07	-8.6	-35.3	-15.5
	08	-6.3	-36.9	-14.3
	09	-4.8	-31.0	-11.6
	10	-2.3	-29.4	-9.3
	11	-0.1	-23.3	-6.1
	12	4.0	-22.7	-2.9
2014	01	3.8	-17.2	-1.7
	02	4.9	-22.0	-2.1
	03	4.7	-15.9	-0.7
	04	7.7	-15.3	1.7
	05	4.8	-18.4	-1.2
	06	5.4	-19.3	-1.0
	07	1.4	-18.9	-3.9
	08	2.2	-21.9	-4.1
	09	3.6	-19.1	-2.3
	10	7.8	-17.6	1.2
	11	7.7	-19.4	0.7
	12	8.1	-22.1	0.2

Year	Month	Business confidence index	Consumer confidence index	GKI economic sentiment index
2015	01	4.4	-23.8	-2.9
	02	3.5	-22.4	-3.2
	03	4.2	-25.8	-3.6
	04	4.9	-25.0	-2.9
	05	3.7	-22.6	-3.1
	06	5.1	-27.0	-3.2
	07	5.0	-26.0	-3.1
	08	5.2	-22.7	-2.1
	09	7.5	-28.3	-1.8
	10	5.8	-19.6	-0.8
	11	4.6	-19.6	-1.7
	12	4.7	-19.2	-1.5
2016	01	7.2	-16.6	1.0
	02	4.6	-20.2	-1.8
	03	4.6	-23.8	-2.8
	04	2.2	-21.1	-3.9
	05	2.3	-18.9	-3.2
	06	1.7	-19.2	-3.7
	07	5.6	-16.1	0.0
	08	1.2	-18.6	-3.9
	09	1.7	-18.5	-3.6
	10	1.0	-20.3	-4.5
	11	2.8	-16.5	-2.2
	12	3.7	-14.1	-0.9
2017	01	4.4	-11.7	0.2
	02	4.5	-12.4	0.1
	03	4.7	-11.5	0.5
	04	6.4	-16.4	0.5
	05	7.9	-16.1	1.7
	06	9.5	-14.6	3.2
	07	11.3	-15.9	4.2
	08	10.2	-13.6	4.0
	09	12.3	-14.3	5.4
	10	10.5	-13.8	4.2
	11	11.7	-14.2	5.0
	12	13.4	-7.7	7.9
2018	01	14.2	-8.9	8.2
	02	15.5	-7.6	9.5
	03	13.6	-5.8	8.6

**GKI ECONOMIC RESEARCH CO.**

1092 Budapest, Ráday u. 42-44.  
Phone: +36 1 318 1284 E-mail: [gki@gki.hu](mailto:gki@gki.hu)

For more information: Gabor Karsai ([karsai.gabor@gki.hu](mailto:karsai.gabor@gki.hu));  
Raymund Petz ([petz.raymund@gki.hu](mailto:petz.raymund@gki.hu))