

23 APRIL 2018

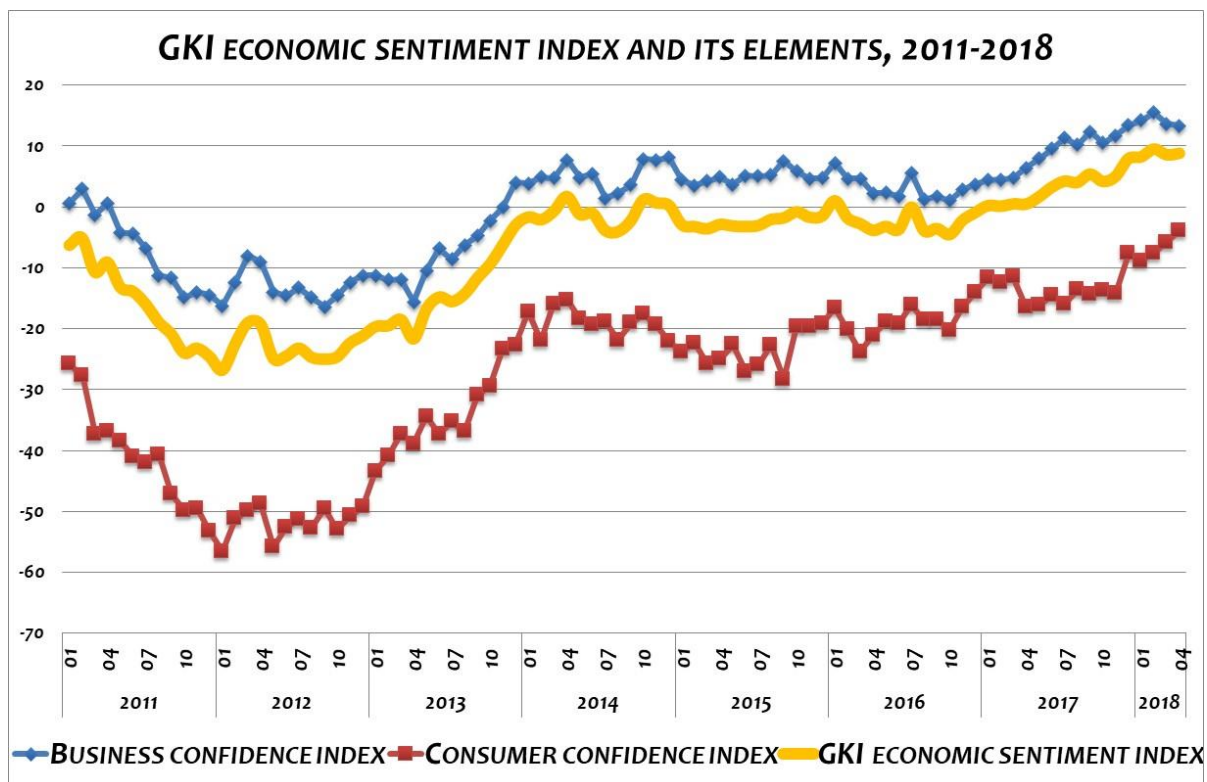
## GKI'S ECONOMIC SENTIMENT INDEX REMAINS CLOSE TO ITS PEAK

In April, GKI's economic sentiment index remained slightly lower than its historic peak in February. According to the empirical survey conducted by GKI ([www.gki.hu](http://www.gki.hu)) with the support of the EU, expectations deteriorated in the business sector within the statistical margin of error, whereas they continued to rise among consumers.

In the **business sector**, expectations in construction and especially in services improved, whereas industrial and trade confidence indices fell, although they still reflect a great deal of optimism. The **industrial** confidence index dropped to its lowest point in the last five months in April. The assessment of the production of the preceding period, the stock of orders (including exports) and inventories deteriorated as well. Only production prospects improved. In **construction** the confidence index increased slightly in April after its two-month drop. Expectations of structural engineering companies deteriorated compared to the previous month, whereas those of civil engineering firms improved significantly. Although the assessment of production in the preceding three-month period declined noticeably in April, that of orders improved slightly. The **trade** confidence index fell back to its September 2017 level in April. Although the assessment of sales positions and the stock of orders became worse, that of inventories picked up. In April, the **services** confidence index reached again its historic peak registered in January. This was mainly due to the favourable opinion on the general business climate as sales expectations stagnated.

The **willingness to employ** strengthened in all sectors, mainly in trade and least among service companies. The main obstacle to growth continues to be labour shortages: half of the companies surveyed in construction and one-third in industry and services mentioned this problem. At the same time, the fear of unemployment of households has never been as low as it is now, in April. Intentions to **raise prices** weakened in all sectors except construction, and inflationary expectations decreased significantly among consumers as well. The assessment of the **perspectives of the Hungarian economy** deteriorated in industry and among households, whereas it deteriorated slightly in other sectors.

Although the **consumer confidence index of GKI** rose for the fifth month in April, it was still somewhat lower than its peak in 2002. Households assessed their financial situation and savings capacity for the future slightly better than in March, and they considered the possibility of purchasing high-value durables to be slightly worse.



### EXPLANATION TO THE METHODOLOGY:

In line with the methodology used by the EU, GKI surveys the expectations of industry, trade, construction, services and households in the calculation of its business confidence index. GKI economic sentiment index is the weighted average of the consumer confidence index and the business confidence index.

The business confidence index is calculated from the responses of enterprises in industry, trade, construction and services given to questions concerning the state of business and expectations of turnover and employment. (As far as services are concerned, similarly to the practice of the EU, companies of the financial and public sectors have not been included in the surveys yet.) GKI publishes seasonally adjusted data by using appropriate mathematical methods to filter out the discrepancies caused by seasonal effects (e.g., differences in weather conditions between winter and summer, increased demand before Christmas, lower output because of summer vacations).

The consumer confidence index is calculated from responses given to questions concerning the expected financial position of households, the expected economic and unemployment situation of the country, and the prospects for saving.

## GKI ECONOMIC SENTIMENT INDEX AND ITS ELEMENTS, 2011-2018

Year	Month	Business confidence index	Consumer confidence index	GKI economic sentiment index
2011	01	0.5	-25.8	-6.3
	02	2.9	-27.7	-5.1
	03	-1.3	-37.3	-10.7
	04	0.6	-36.8	-9.1
	05	-4.3	-38.5	-13.2
	06	-4.4	-41	-13.9
	07	-6.9	-42	-16
	08	-11.3	-40.7	-18.9
	09	-11.7	-47.2	-20.9
	10	-14.9	-49.8	-24
	11	-14	-49.5	-23.2
	12	-14.5	-53.3	-24.6
2012	01	-16.3	-56.6	-26.8
	02	-12.4	-51.2	-22.5
	03	-8.1	-49.9	-19
	04	-9	-48.8	-19.3
	05	-14	-55.9	-24.9
	06	-14.6	-52.6	-24.5
	07	-13.3	-51.4	-23.2
	08	-14.9	-52.7	-24.7
	09	-16.4	-49.5	-25
	10	-14.6	-53	-24.6
	11	-12.4	-50.7	-22.4
	12	-11.3	-49.3	-21.2
2013	01	-11.3	-43.4	-19.6
	02	-12.0	-40.9	-19.5
	03	-11.9	-37.3	-18.5
	04	-15.6	-38.9	-21.7
	05	-10.5	-34.4	-16.7
	06	-6.9	-37.3	-14.8
	07	-8.6	-35.3	-15.5
	08	-6.3	-36.9	-14.3
	09	-4.8	-31.0	-11.6
	10	-2.3	-29.4	-9.3
	11	-0.1	-23.3	-6.1
	12	4.0	-22.7	-2.9
2014	01	3.8	-17.2	-1.7
	02	4.9	-22.0	-2.1
	03	4.7	-15.9	-0.7
	04	7.7	-15.3	1.7
	05	4.8	-18.4	-1.2
	06	5.4	-19.3	-1.0
	07	1.4	-18.9	-3.9
	08	2.2	-21.9	-4.1
	09	3.6	-19.1	-2.3
	10	7.8	-17.6	1.2
	11	7.7	-19.4	0.7
	12	8.1	-22.1	0.2

Year	Month	Business confidence index	Consumer confidence index	GKI economic sentiment index
2015	01	4.4	-23.8	-2.9
	02	3.5	-22.4	-3.2
	03	4.2	-25.8	-3.6
	04	4.9	-25.0	-2.9
	05	3.7	-22.6	-3.1
	06	5.1	-27.0	-3.2
	07	5.0	-26.0	-3.1
	08	5.2	-22.7	-2.1
	09	7.5	-28.3	-1.8
	10	5.8	-19.6	-0.8
	11	4.6	-19.6	-1.7
	12	4.7	-19.2	-1.5
2016	01	7.2	-16.6	1.0
	02	4.6	-20.2	-1.8
	03	4.6	-23.8	-2.8
	04	2.2	-21.1	-3.9
	05	2.3	-18.9	-3.2
	06	1.7	-19.2	-3.7
	07	5.6	-16.1	0.0
	08	1.2	-18.6	-3.9
	09	1.7	-18.5	-3.6
	10	1.0	-20.3	-4.5
	11	2.8	-16.5	-2.2
	12	3.7	-14.1	-0.9
2017	01	4.4	-11.7	0.2
	02	4.5	-12.4	0.1
	03	4.7	-11.5	0.5
	04	6.4	-16.4	0.5
	05	7.9	-16.1	1.7
	06	9.5	-14.6	3.2
	07	11.3	-15.9	4.2
	08	10.2	-13.6	4.0
	09	12.3	-14.3	5.4
	10	10.5	-13.8	4.2
	11	11.7	-14.2	5.0
	12	13.4	-7.7	7.9
2018	01	14.2	-8.9	8.2
	02	15.5	-7.6	9.5
	03	13.6	-5.8	8.6
	04	13.3	-3.9	8.8

**GKI ECONOMIC RESEARCH CO.**

1092 Budapest, Ráday u. 42-44.  
Phone: +36 1 318 1284 E-mail: [gki@gki.hu](mailto:gki@gki.hu)

For more information:  
Gabor Karsai ([karsai.gabor@gki.hu](mailto:karsai.gabor@gki.hu)); Raymund Petz ([petz.raymund@gki.hu](mailto:petz.raymund@gki.hu))