



25 JUNE 2018

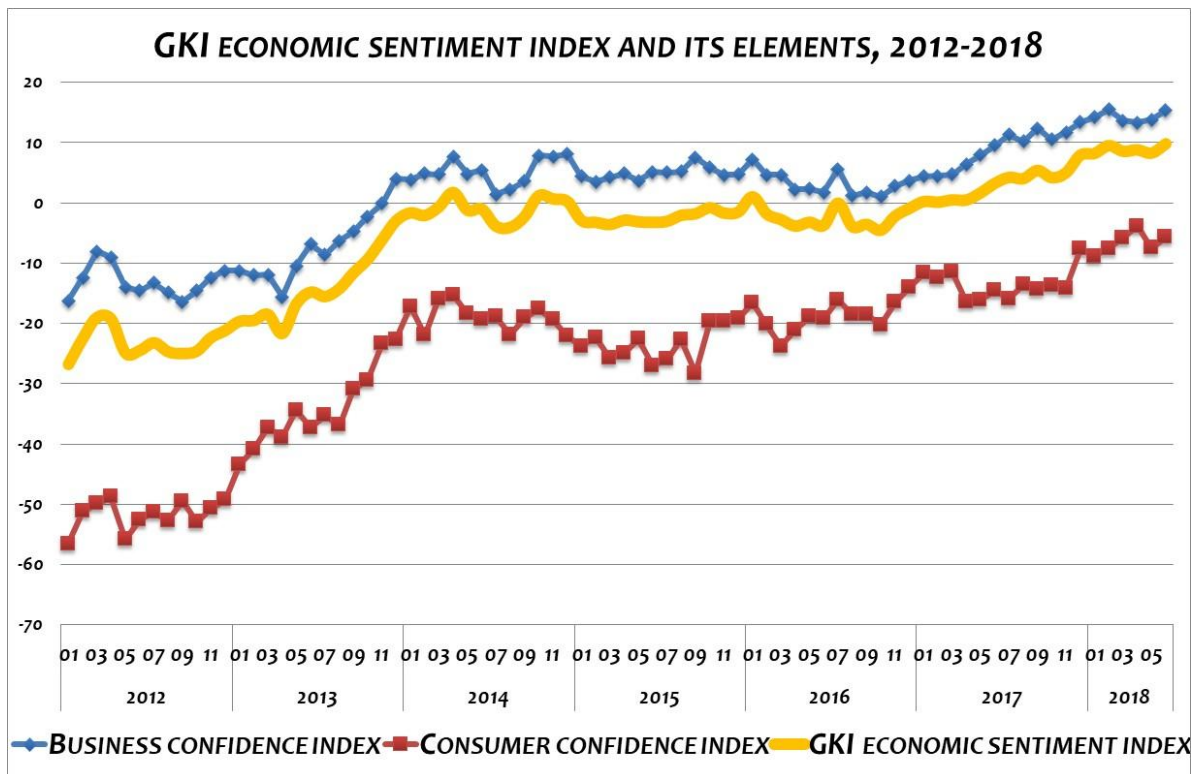
GKI'S ECONOMIC SENTIMENT INDEX REACHED A NEW HISTORIC PEAK

GKI's economic sentiment index reached another peak in June. According to the empirical survey conducted by GKI (www.gki.hu) with the support of the EU, business expectations in June were close to their peak reached in February, and consumer ones remained hardly below their peak as well.

Expectations became more upbeat in June in the **business sphere** except for industry, whereas the construction confidence index rose to its new historical peak. The **industrial** confidence index declined somewhat compared to its peak in May. This was partly due to the deteriorating assessment of both the production and the stock of orders (including exports) of the preceding and the next period. Only the assessment of inventories became somewhat better. Although the **construction** confidence index rose only marginally in June, it reached a new height. Expectations of civil engineering companies improved, whereas those of structural engineering ones deteriorated slightly. Although the assessment of production in the preceding three-month period improved somewhat, that of orders deteriorated slightly. Following its peak in February, the **trade** confidence index had deteriorated for three months; however, it almost reached its February level in June. The assessment of sales positions and the stock of orders improved considerably, whereas that of inventories became worse. Following its drop in May, the **services** confidence index increased in June; however, it did not reach its historic height of April. The evaluation of the general business climate improved, and sales expectations also went up.

The **intentions of employment** weakened in industry, whereas they strengthened in trade, services and especially in construction. The fear of unemployment among households has never been so low. **Intentions to raise prices** became somewhat more moderate in industry and services, whereas they were more marked in construction and especially in trade. Inflationary expectations of consumers continued to strengthen a bit. The assessment of the perspectives of the **Hungarian economy** deteriorated spectacularly in almost all sectors. However, there was some improvement in trade and among consumers, in these segments this deterioration already occurred in May.

The **GKI consumer confidence index** improved in June, though to a lesser extent than its deterioration in May, and was not far from its peak in April or 16 years ago. Households assessed their financial situation and savings capacity for the future slightly better than a month ago. It has not been as favourable as it is today for 16 years. Households were also more optimistic over the possibilities of purchasing high-value durables.



EXPLANATION TO THE METHODOLOGY:

In line with the methodology used by the EU, GKI surveys the expectations of industry, trade, construction, services and households in the calculation of its business confidence index. GKI economic sentiment index is the weighted average of the consumer confidence index and the business confidence index.

The business confidence index is calculated from the responses of enterprises in industry, trade, construction and services given to questions concerning the state of business and expectations of turnover and employment. (As far as services are concerned, similarly to the practice of the EU, companies of the financial and public sectors have not been included in the surveys yet.) GKI publishes seasonally adjusted data by using appropriate mathematical methods to filter out the discrepancies caused by seasonal effects (e.g., differences in weather conditions between winter and summer, increased demand before Christmas, lower output because of summer vacations).

The consumer confidence index is calculated from responses given to questions concerning the expected financial position of households, the expected economic and unemployment situation of the country, and the prospects for saving.

GKI ECONOMIC SENTIMENT INDEX AND ITS ELEMENTS, 2012-2018

Year	Month	Business confidence index	Consumer confidence index	GKI economic sentiment index
2012	01	-16.3	-56.6	-26.8
	02	-12.4	-51.2	-22.5
	03	-8.1	-49.9	-19
	04	-9	-48.8	-19.3
	05	-14	-55.9	-24.9
	06	-14.6	-52.6	-24.5
	07	-13.3	-51.4	-23.2
	08	-14.9	-52.7	-24.7
	09	-16.4	-49.5	-25
	10	-14.6	-53	-24.6
	11	-12.4	-50.7	-22.4
	12	-11.3	-49.3	-21.2
2013	01	-11.3	-43.4	-19.6
	02	-12.0	-40.9	-19.5
	03	-11.9	-37.3	-18.5
	04	-15.6	-38.9	-21.7
	05	-10.5	-34.4	-16.7
	06	-6.9	-37.3	-14.8
	07	-8.6	-35.3	-15.5
	08	-6.3	-36.9	-14.3
	09	-4.8	-31.0	-11.6
	10	-2.3	-29.4	-9.3
	11	-0.1	-23.3	-6.1
	12	4.0	-22.7	-2.9
2014	01	3.8	-17.2	-1.7
	02	4.9	-22.0	-2.1
	03	4.7	-15.9	-0.7
	04	7.7	-15.3	1.7
	05	4.8	-18.4	-1.2
	06	5.4	-19.3	-1.0
	07	1.4	-18.9	-3.9
	08	2.2	-21.9	-4.1
	09	3.6	-19.1	-2.3
	10	7.8	-17.6	1.2
	11	7.7	-19.4	0.7
	12	8.1	-22.1	0.2
2015	01	4.4	-23.8	-2.9
	02	3.5	-22.4	-3.2
	03	4.2	-25.8	-3.6
	04	4.9	-25.0	-2.9
	05	3.7	-22.6	-3.1
	06	5.1	-27.0	-3.2
	07	5.0	-26.0	-3.1
	08	5.2	-22.7	-2.1
	09	7.5	-28.3	-1.8
	10	5.8	-19.6	-0.8
	11	4.6	-19.6	-1.7
	12	4.7	-19.2	-1.5

Year	Month	Business confidence index	Consumer confidence index	GKI economic sentiment index
2016	01	7.2	-16.6	1.0
	02	4.6	-20.2	-1.8
	03	4.6	-23.8	-2.8
	04	2.2	-21.1	-3.9
	05	2.3	-18.9	-3.2
	06	1.7	-19.2	-3.7
	07	5.6	-16.1	0.0
	08	1.2	-18.6	-3.9
	09	1.7	-18.5	-3.6
	10	1.0	-20.3	-4.5
	11	2.8	-16.5	-2.2
	12	3.7	-14.1	-0.9
2017	01	4.4	-11.7	0.2
	02	4.5	-12.4	0.1
	03	4.7	-11.5	0.5
	04	6.4	-16.4	0.5
	05	7.9	-16.1	1.7
	06	9.5	-14.6	3.2
	07	11.3	-15.9	4.2
	08	10.2	-13.6	4.0
	09	12.3	-14.3	5.4
	10	10.5	-13.8	4.2
	11	11.7	-14.2	5.0
	12	13.4	-7.7	7.9
2018	01	14.2	-8.9	8.2
	02	15.5	-7.6	9.5
	03	13.6	-5.8	8.6
	04	13.3	-3.9	8.8
	05	13.8	-7.5	8.3
	06	15.3	-5.7	9.8

GKI ECONOMIC RESEARCH CO.

1092 Budapest, Ráday u. 42-44.
Phone: +36 1 318 1284 E-mail: gki@gki.hu

For more information:
Gabor Karsai (karsai.gabor@gki.hu); Raymund Petz (petz.raymund@gki.hu)