



Stagnating business and deteriorating consumer expectations

In June GKI-Erste economic confidence index adjusted for seasonal effects continued to deteriorate. According to the empirical survey conducted by GKI (www.gki.hu) with the support of the EU business expectations remained unchanged after the significant drop recorded in May, whereas consumer expectations have been deteriorating continuously for more than half a year.

In the business sector only industrial expectations improved, but they increased significantly less than the extent of the drop in May. The assessment of the production of the preceding period stagnated, whereas expectations and the evaluation of the stock of orders turned better. Respondents qualified the stocks of own production somewhat smaller than before. In construction the confidence index continued to decrease after the huge drop in May. The evaluation of the production level of the past three months basically remained unchanged but that of orders deteriorated markedly. Business prospects of civil engineering companies were somewhat less adverse in June than those of companies in structural architecture. The confidence index of trade dropped substantially after the slight decrease in the past two months. The assessment of the orders deteriorated the most but sales positions were also considered to be unfavourable. The evaluation of stocks remained unchanged. Service companies assessed the sales of the subsequent period worse and those of the past period better, whereas opinion on the course of the business turned better compared with May.

Intentions of employment had been weakening for three months in industry and construction, but they also turned better in the other sectors. The fear from unemployment of households strengthened, too. Intentions of price increases weakened in all sectors, whereas inflationary expectations of consumers strengthened slightly. The evaluation of the prospects of the Hungarian economy continued to deteriorate in all sectors as well except for industry and among consumers.

The consumer confidence index decreased again. Households assessed their future financial situation, saving capability and the possibility of purchasing high-value durables worse than before.

Explanation to the methodology:

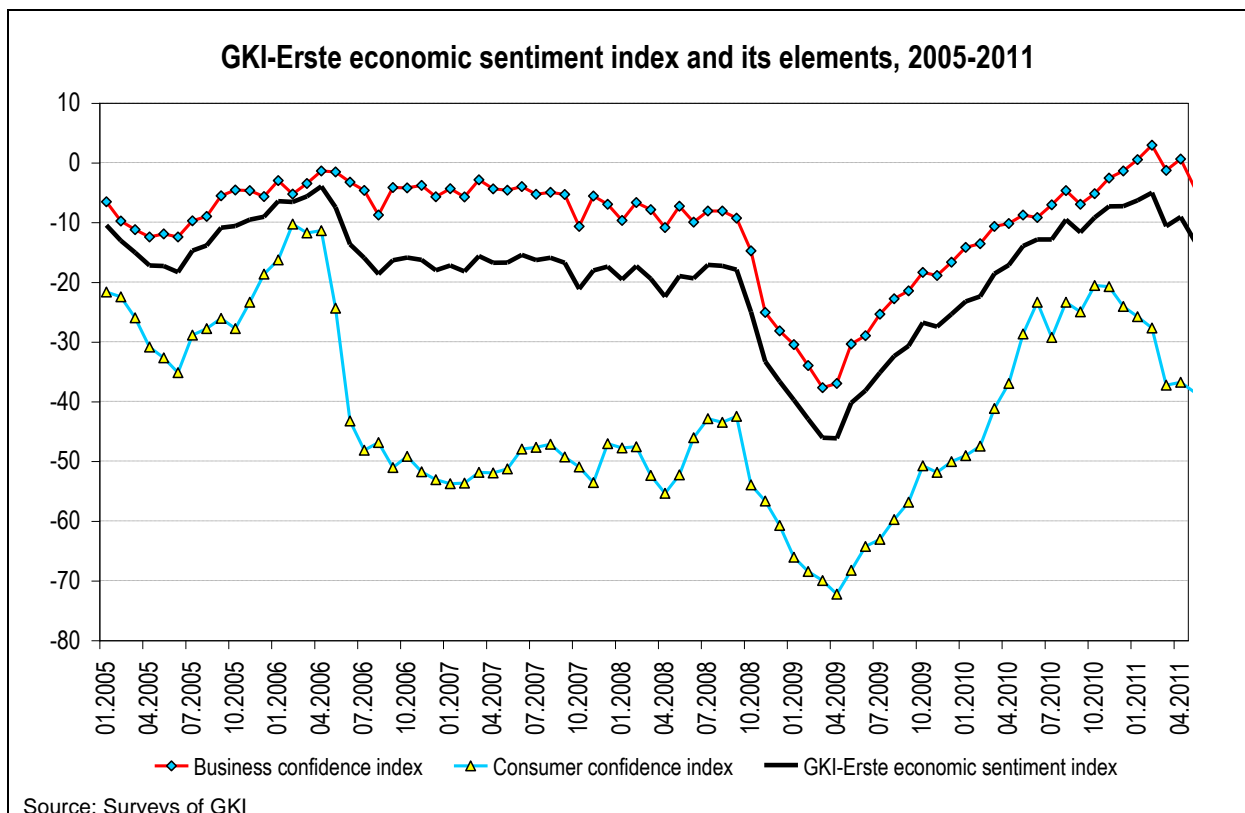
In line with the methodology used by the EU, GKI surveys the expectations of industry, trade, construction and services in the calculation of its business confidence index. (As far as services are concerned, similarly to the practice of the EU, companies of the financial and public sectors have not been included in the surveys yet.) GKI publishes seasonally adjusted data by using appropriate mathematical methods to filter out the discrepancies caused by seasonal effects (e.g. differences in weather conditions between winter and summer, increased demand before Christmas, lower output because of summer vacations).

According to the new recommendation of the EU, GKI recalculated the former database with the new 'TEAOR 08' codes (statistical business activity codes) in January 2011.

The consumer confidence index is calculated from responses given to questions concerning the actual and the expected financial position of households, the actual and the expected economic situation of the country, and the purchase of higher value consumer durables.

The business confidence index is calculated from the responses of enterprises in industry, trade, construction and services given to questions concerning the state of business and expectations. The history of the subindex that reflects the expectations of services is shorter than that of other sectors. This kind of surveys started in 1998. Therefore the business confidence index for 1996-1997 had to be recalculated. This was made by using the mathematical correlation among the confidence indices of various sectors in the period after 1998.

GKI-Erste economic confidence index is the weighted average of the consumer confidence index and the business confidence index.



GKI-Erste economic sentiment index and its elements, 1996-2011

	1996.											
	I.	II.	III.	IV.	V.	VI.	VII.	VIII.	IX.	X.	XI.	XII.
Business confidence index	-5.7	-4.4	-5.4	-6.3	-5.2	-4.1	-4.9	-2.8	-0.8	-0.2	0.3	-1.0
Consumer confidence index	-45.1	-48.8	-45.9	-44.8	-50.5	-51.5	-46.8	-41.9	-42.8	-40.0	-34.9	-39.6
GKI-Erste economic sentiment index	-15.9	-15.9	-15.9	-16.3	-17.0	-16.5	-15.8	-13.0	-11.7	-10.5	-8.8	-11.0
	1997.											
	I.	II.	III.	IV.	V.	VI.	VII.	VIII.	IX.	X.	XI.	XII.
Business confidence index	-2.0	1.6	2.5	-1.2	2.7	4.3	5.2	5.1	4.9	6.4	6.2	7.1
Consumer confidence index	-40.0	-41.1	-39.1	-41.6	-39.4	-34.7	-33.8	-30.3	-25.6	-27.2	-23.0	-26.1
GKI-Erste economic sentiment index	-11.9	-9.5	-8.3	-11.7	-8.3	-5.9	-5.0	-4.1	-3.0	-2.3	-1.4	-1.5
	1998.											
	I.	II.	III.	IV.	V.	VI.	VII.	VIII.	IX.	X.	XI.	XII.
Business confidence index	5.4	4.9	5.2	8.8	7.2	6.7	7.2	4.4	2.0	-2.1	-2.9	-3.3
Consumer confidence index	-22.0	-19.0	-15.6	-18.6	-19.9	-10.4	-8.2	-9.8	-14.1	-13.9	-16.3	-22.7
GKI-Erste economic sentiment index	-1.7	-1.3	-0.2	1.7	0.1	2.3	3.2	0.7	-2.2	-5.2	-6.4	-8.4
	1999.											
	I.	II.	III.	IV.	V.	VI.	VII.	VIII.	IX.	X.	XI.	XII.
Business confidence index	-0.1	-4.9	-4.1	-4.5	-7.7	-8.1	-4.0	-3.8	-3.2	-1.3	-1.4	0.3
Consumer confidence index	-22.0	-19.7	-22.8	-28.5	-29.6	-28.9	-35.5	-32.9	-30.4	-27.1	-25.5	-29.9
GKI-Erste economic sentiment index	-5.8	-8.7	-8.9	-10.7	-13.4	-13.5	-12.2	-11.3	-10.3	-8.0	-7.7	-7.5
	2000.											
	I.	II.	III.	IV.	V.	VI.	VII.	VIII.	IX.	X.	XI.	XII.
Business confidence index	-0.2	-0.7	-2.0	3.5	5.6	4.5	4.1	3.4	2.9	3.1	5.1	3.6
Consumer confidence index	-25.9	-28.1	-29.2	-31.2	-28.9	-30.9	-33.0	-30.4	-32.6	-29.6	-30.7	-26.6
GKI-Erste economic sentiment index	-6.9	-7.8	-9.0	-5.5	-3.3	-4.7	-5.5	-5.4	-6.3	-5.4	-4.2	-4.2
	2001.											
	I.	II.	III.	IV.	V.	VI.	VII.	VIII.	IX.	X.	XI.	XII.
Business confidence index	0.6	2.5	4.0	3.7	0.1	0.5	-2.2	-2.6	-4.3	-7.1	-8.2	-6.2
Consumer confidence index	-25.2	-23.2	-23.4	-20.9	-21.2	-22.0	-19.9	-20.9	-20.7	-19.3	-16.6	-15.1
GKI-Erste economic sentiment index	-6.1	-4.2	-3.1	-2.7	-5.4	-5.3	-6.8	-7.4	-8.6	-10.3	-10.4	-8.5
	2002.											
	I.	II.	III.	IV.	V.	VI.	VII.	VIII.	IX.	X.	XI.	XII.
Business confidence index	-6.4	-5.1	-4.0	-6.2	-1.0	-0.4	-3.1	-0.2	-1.7	-0.5	-2.1	-3.6
Consumer confidence index	-15.6	-13.9	-5.4	-0.6	-2.1	-1.8	-1.3	0.5	-3.5	-3.5	-8.7	-7.8
GKI-Erste economic sentiment index	-8.8	-7.4	-4.4	-4.7	-1.3	-0.8	-2.6	0.0	-2.2	-1.3	-3.8	-4.7
	2003.											
	I.	II.	III.	IV.	V.	VI.	VII.	VIII.	IX.	X.	XI.	XII.
Business confidence index	-6.8	-6.9	-7.2	-6.7	-7.4	-7.2	-4.1	-4.8	-7.7	-6.3	-1.8	-3.3
Consumer confidence index	-12.0	-21.9	-22.5	-19.2	-21.4	-23.5	-25.1	-32.7	-32.4	-32.3	-31.0	-31.1
GKI-Erste economic sentiment index	-8.2	-10.8	-11.2	-9.9	-11.1	-11.4	-9.6	-12.1	-14.1	-13.0	-9.4	-10.5
	2004.											
	I.	II.	III.	IV.	V.	VI.	VII.	VIII.	IX.	X.	XI.	XII.
Business confidence index	-5.0	-4.9	-3.6	0.0	-3.2	-1.2	-4.7	-3.4	-3.2	-7.1	-11.2	-8.4
Consumer confidence index	-34.6	-34.9	-35.3	-33.8	-29.1	-26.0	-26.7	-27.7	-25.8	-26.3	-26.1	-24.3
GKI-Erste economic sentiment index	-12.7	-12.7	-11.9	-8.8	-9.9	-7.6	-10.4	-9.7	-9.1	-12.1	-15.1	-12.5
	2005.											
	I.	II.	III.	IV.	V.	VI.	VII.	VIII.	IX.	X.	XI.	XII.
Business confidence index	-8.5	-10.7	-11.6	-12.4	-13.1	-13.0	-10.0	-9.9	-5.2	-5.0	-5.2	-7.0
Consumer confidence index	-21.7	-22.5	-26.0	-30.9	-32.7	-35.2	-28.9	-27.8	-26.1	-27.8	-23.4	-18.7
GKI-Erste economic sentiment index	-11.9	-13.8	-15.4	-17.2	-18.2	-18.7	-14.9	-14.6	-10.6	-10.9	-9.9	-10.0
	2006.											
	I.	II.	III.	IV.	V.	VI.	VII.	VIII.	IX.	X.	XI.	XII.
Business confidence index	-5.1	-5.8	-4.0	-1.4	-1.4	-4.4	-5.1	-7.8	-4.9	-4.4	-4.2	-5.9
Consumer confidence index	-16.3	-10.3	-11.8	-11.4	-24.4	-43.3	-48.2	-46.9	-51.1	-49.2	-51.8	-53.1
GKI-Erste economic sentiment index	-8.0	-6.9	-6.1	-4.0	-7.4	-14.5	-16.3	-18.0	-16.9	-16.0	-16.5	-18.2

	2007.											
	I.	II.	III.	IV.	V.	VI.	VII.	VIII.	IX.	X.	XI.	XII.
Business confidence index	-3.6	-4.8	-2.7	-4.6	-4.2	-3.6	-4.6	-4.6	-5.6	-10.8	-5.7	-6.5
Consumer confidence index	-53.8	-53.7	-51.9	-52.0	-51.3	-48.0	-47.7	-47.2	-49.3	-51.0	-53.6	-47.1
GKI-Erste economic sentiment index	-16.7	-17.5	-15.5	-16.9	-16.5	-15.1	-15.8	-15.7	-17.0	-21.2	-18.1	-17.1
	2008.											
	I.	II.	III.	IV.	V.	VI.	VII.	VIII.	IX.	X.	XI.	XII.
Business confidence index	-9.6	-7.6	-8.1	-11.8	-7.7	-9.1	-8.2	-9.0	-9.8	-15.0	-25.0	-28.1
Consumer confidence index	-47.8	-47.6	-52.4	-55.4	-52.3	-46.1	-42.9	-43.5	-42.5	-54.0	-56.7	-60.8
GKI-Erste economic sentiment index	-19.5	-18.0	-19.7	-23.2	-19.3	-18.7	-17.2	-18.0	-18.3	-25.2	-33.2	-36.6
	2009.											
	I.	II.	III.	IV.	V.	VI.	VII.	VIII.	IX.	X.	XI.	XII.
Business confidence index	-30.3	-33.9	-37.4	-36.3	-29.0	-28.9	-24.7	-22.2	-22.1	-17.8	-19.1	-15.9
Consumer confidence index	-66.1	-68.5	-70.0	-72.3	-68.3	-64.3	-63.1	-59.8	-56.9	-50.8	-51.9	-50.1
GKI-Erste economic sentiment index	-39.6	-42.9	-45.8	-45.7	-39.2	-38.1	-34.7	-32.0	-31.2	-26.4	-27.6	-24.8
	2010.											
	I.	II.	III.	IV.	V.	VI.	VII.	VIII.	IX.	X.	XI.	XII.
Business confidence index	-14.1	-13.7	-10.5	-10.3	-8.9	-9.5	-7.1	-4.7	-6.7	-5.2	-3.1	-1.8
Consumer confidence index	-49.1	-47.5	-41.2	-37.0	-28.7	-23.4	-29.3	-23.4	-25.0	-20.6	-20.8	-24.1
GKI-Erste economic sentiment index	-23.2	-22.5	-18.4	-17.3	-14.0	-13.1	-12.8	-9.5	-11.5	-9.2	-7.7	-7.6
	2011.											
	I.	II.	III.	IV.	V.	VI.	VII.	VIII.	IX.	X.	XI.	XII.
Business confidence index	0.5	2.9	-1.3	0,6	-4.3	-4.4						
Consumer confidence index	-25.8	-27.7	-37.3	-36,8	-38.5	-41.0						
GKI-Erste economic sentiment index	-6.3	-5.1	-10.7	-9,1	-13.2	--13.9						